



www.novapublishers.com
415 Oser Avenue, Suite N
Hauppauge NY 11788-3619, U.S.A.
Phone: (631) 231-7269 Fax: (631) 231-8175
Email: nova.main@novapublishers.com

CHAPTER GUIDELINES

Dear Authors,

We are grateful for your time and attention to Nova's manuscript submission instructions. Strict adherence to our manuscript guidelines will help to avoid unwanted multiple review fees and delays and will ensure timely and high quality publication of your work.

Thank you.

Nova Editorial Team

TABLE OF CONTENTS

Notes for Chapter Contributors	1
Permission Request Form	3
Copyright Transfer and Disclosure Form	5
Color Fee	7
Biographical Sketch	9
Acceptable Formats	11
MS Word	11
Latex	11
Diagrams, Photographs, Illustrations and Charts	13
English Editing	15
Formatting Requirements	17
Spelling of All Names, Credentials and Affiliations on the Title Page of the Book	19
Running Heads	21
Grammar	23
English/British Spelling	25
Keywords	27
Figures and Tables	29
Figures	29
Tables	30
Equations	31
Footnotes	33
References: Chicago Manual Style	35
Sample Chapter	41



www.novapublishers.com
415 Oser Avenue, Suite N
Hauppauge NY 11788-3619, U.S.A.
Phone: (631) 231-7269 Fax: (631) 231-8175
Email: nova.main@novapublishers.com

NOTES FOR CHAPTER CONTRIBUTORS

1. There is no charge for publishing with NOVA. The only possible exceptions are fees for English editing (when required) and color figures (if any). For questions, please contact nova.main@novapublishers.com.
2. Open Access – Nova offers various Open Access options to its authors. For more information, please visit the *Open Access* tab under “About Nova” on our website.
3. A free copy of the e-book version is sent to the first-listed contributor of each chapter when the book becomes available. If your final chapter is over fifty (50) printed book pages, we will provide the first-listed contributor with a printed copy as well as an eBook in appreciation of your valuable contribution. International shipping charges will apply. Additionally, Nova offers a special 30% discount on all prepublication orders. You are also welcome to extend this special prepublication discount to your esteemed colleagues and peers. Libraries, institutions and organizations can apply a special 20% discount on all prepublication orders. You will receive the discount code in a separate email from our marketing department once the book is announced on our website.
4. The scientific community is the intended audience of books published by Nova. Coauthors may be invited by you at your discretion and are welcome by Nova.
5. Contributors are encouraged to submit chapters ranging from 5,000 to 35,000 words. Contributors are also invited to submit an Expert Commentary (optional) of 2,000-4,000 words on innovative ideas, developments, directions, challenges, or trends in the field.
6. The choice of theme and approach are at the discretion of the author but acceptance is only upon submission of the draft abstract.
7. Research results (studies) are the primary type of article desired but review articles are also welcome.
8. Revised versions of an earlier work are acceptable provided the revisions constitute at least 50%. In this case, gathering any permissions necessary (such as illustrations) is the responsibility of the author. Such permissions must include digital rights as well as worldwide print rights.
9. Copyright must be transferred to Nova via email along with chapter submission.
10. Personalized chapter offprints are available.
11. If you wish us to review the English for style, please clearly mark that at the beginning of the article.



www.novapublishers.com
415 Oser Avenue, Suite N
Hauppauge NY 11788-3619, U.S.A.
Phone: (631) 231-7269 Fax: (631) 231-8175
Email: nova.main@novapublishers.com

PERMISSION REQUEST FORM

(FOR COPYRIGHTED OR PREVIOUSLY PUBLISHED WORK)

Date:

To:

From:

Permission is hereby granted to Nova Science Publishers, Inc. to reproduce in the upcoming Nova title _____ its translations, if any, with worldwide distribution and in all formats, printed and electronic, the graphics listed below from the original publication titled _____.

ORIGINAL PUBLICATION

Author(s):

Title of Article/Chapter:

Title of Journal/Book:

Publication Year:

Number of Page(s):

Original Graphic:

Page Number(s):

Please include the signed permission form with the final draft of the manuscript. The manuscript submission is incomplete without it. Please make sure to label the file correctly so we can identify it. Thank you for your consideration of this request.

I/we grant permission for the use requested above.

Name of Publisher or Copyright Holder: _____ Date: _____

Signature of Publisher or Copyright Holder Representative: _____



COPYRIGHT TRANSFER AND DISCLOSURE FORM

THIS FORM MUST BE SIGNED AND SUBMITTED TO NOVA OR THE EDITOR WITH SUBMISSION OF YOUR CHAPTER/ARTICLE/BOOK/JOURNAL.

Under the terms of United States Copyright Law, Nova Science Publishers, Inc. (NOVA) must formally obtain transfer of copyright before a chapter/article can be published unless it was prepared as part of the author’s official duties as an employee of the United States government.

In consideration of the fact that NOVA undertakes to publish my chapter/article (hereinafter referred to as the “Work”):

1. I affirm that the Work is original and previously unpublished and that neither the Work or any material portion thereof is in the public domain; that it contains no matter that is libelous or is otherwise unlawful or that invades individual privacy or infringes any proprietary right or any statutory copyright or privacy law, including but not limited to HIPAA; and I agree to indemnify, defend, and hold the publisher harmless against any claim, damages, lawsuits, causes of action, liabilities, costs, obligations, expenses, or judgment arising out of any claim or allegation by a third party that the Work or the publication of the Work infringes upon or violates any rights of such third party. Further, I warrant that I have the full right, power, and authority to assign the copyright to NOVA and to grant the rights provided herein and that no right protected by copyright to the Work has been previously assigned, pledged, or encumbered. It is understood that the copyright to the Work has not been registered with the United States Copyright Office, but in the event that such registration has taken place, I will promptly transfer the copyright to NOVA.
2. I affirm that I (and my coauthors) have obtained written permission for unrestricted use of any previously copyrighted material included in the Work and that I shall deliver each such permission to Nova. I further affirm that:
 - I (and my coauthors) have stated any possible conflicts of interest within the Work;
 - I (and my coauthors) have stated all external sources of funding related to the Work;
 - If this Work involved human participants, informed consent was received from each individual;
 - If this Work involved human participants, it was conducted in accordance with the 1964 Declaration of Helsinki;
 - If this Work involved experiments with human participants or animals, it was conducted in accordance with our related institutions’ research ethics guidelines.
3. I warrant that the Work has not been published elsewhere in whole or in part; that I have not given anyone else permission to publish or otherwise exploit any part of the Work, including in any other manuscript; and that the Work is not currently under consideration or accepted for publication elsewhere in its, or any other, format. Should the Work contain any material that requires written permission to be included in the Work, I will obtain such permission at my own expense from the copyright proprietor using the Nova Permission Form.
4. I (and my coauthors) hereby assign and transfer to NOVA all rights of copyright ownership and permissions to the Work, including without limitation or restriction, all rights of reproduction, derivation, distribution, sale, reuse, translation and display of the Work, in whole or in part, including recompilation, cross-publication, and stand-alone publication, in any and all forms of media now or hereafter known, including all electronic and digital media, as protected by the laws of the United States and foreign countries and to authorize others to make such uses of the Work. These rights will become the property of NOVA from the date of acceptance of the Work for publication and extend for the life of the copyright. NOVA grants the author (and all coauthors) the right to present orally in any forum all or part of the Work. I understand that NOVA, as copyright owner, has authority to grant permission to reproduce the Work. If my Work is not accepted for publication by Nova, my signed Copyright Transfer and Disclosure Form will immediately become null and void and have no force, binding power, or validity.

Book/Journal Title: _____

Chapter/Article Title: _____

I sign for and accept responsibility for transferring copyright of this Work to NOVA.

_____ I prepared the Work as part of my official duties as any employee of the United States Federal Government and am therefore unable to transfer rights to NOVA. I affirm the author’s warranties in points 1 and 2 above.

(Corresponding Author - Please Print)

(Date)

(Signature)

*Nothing contained in this document shall prohibit submission of the article/chapter to NIH by the author in compliance with the Public Access Policy.

COLOR FEE*

Color graphics are permitted. The price for color is \$60 per figure.

If you choose the no color option and it is later determined that there are color figures that are not legible in the printed book, the following options are available to ensure the high quality of the publication:

1. You can pay for the color figures that will not be readable in black and white in the printed book.
2. We can publish the book in e-book format only. All the figures will be in color in the e-version.
3. You may resend your color figures in black and white. We would replace the color figures in both the e-version and the print version of the book.
4. Illegible figures may have to be removed from the book.

**NOTE: Figures/tables will be in color for the e-book version (as long as they are submitted in color) and printed black and white (grayscale) for the hardcover version if you do not want to place an order. All figures must be clear and easily readable.*



www.novapublishers.com
415 Oser Avenue, Suite N
Hauppauge NY 11788-3619, U.S.A.
Phone: (631) 231-7269 Fax: (631) 231-8175
Email: nova.main@novapublishers.com

BIOGRAPHICAL SKETCH

Name:

Affiliation:

Education:

Business Address:

Research and Professional Experience:

Professional Appointments:

Honors:

Publications from the Last 3 Years:

ACCEPTABLE FORMATS

MS WORD

If the program being used is MS Word, please use letter size (not A4 paper), Times New Roman, 10.5 point and set line spacing of 1.1. NOVA will be performing page layout.

LATEX

Nova requests use of the Nova macro. This is ARTICLE.STY set at 4.5 inches (11.43 cm) and letter size (not A4 paper). Please try to use outside justified page headers. If you would like to add any packages to this macro beyond those already specified, it is mandatory that the corresponding .sty files be submitted with the chapter. Nova currently uses the Windows Operating System.

DIAGRAMS, PHOTOGRAPHS, ILLUSTRATIONS AND CHARTS

All diagrams, photographs, illustrations and charts (*not tables*) are to be referred to in the text as Figures and should be numbered consecutively with Arabic numerals. These figures must be supplied as separate electronic files named in the format in which they were created and must be one of the following types: pptx, ai or psd. For photos, acceptable image formats includes jpeg, eps, png, tiff, bmp and gif. The required resolution of these figures must be 350-750 dpi. The higher the resolution, the clearer the printed image.

Figures must also be placed inside or at the end of the manuscript. If previously published figures are used, written permission of the copyright holders must be obtained and submitted along with the text indicating copyright holder's citation instructions. If there are any figures which the publisher is unable to utilize, the submission is considered incomplete.

Please try to keep vertical (*portrait*) tables and figures a maximum of 4.5 inches wide. If width is a problem, use the landscape layout with section breaks on both sides if MS Word is being used. Maximum width is 6.5 inches wide.

ENGLISH EDITING

If you wish Nova to review any chapters for English, please be sure that English Requested is clearly marked on the first page of any such chapters.

FORMATTING REQUIREMENTS

SPELLING OF ALL NAMES, CREDENTIALS AND AFFILIATIONS ON THE TITLE PAGE OF THE BOOK

Author names should be listed as first name, middle name or middle initial (if used), last name (surname).

INCORRECT	CORRECT
Anderson, John Michael	John Michael Anderson
Anderson, J. M.	J. M. Anderson

Credentials (academic degrees) can only appear *after* the author's name, not before.

- “Professor, Director, PhD Student, Dr., BA, BS” should not be included:
- Only MD or PhD

INCORRECT	CORRECT
Professor, Dr. John M. Anderson	John M. Anderson, MD <i>or</i> John M. Anderson, PhD <i>or</i>
Professor, John M. Anderson, Director John M. Anderson, PhD Student, BA, BS	John M. Anderson John M. Anderson

Affiliations must include City, State (if it applies) and Country. No zip codes/postal codes or street addresses should be included.

INCORRECT	CORRECT
Department of Medicine Columbia University 116th St & Broadway New York NY 10027	Department of Medicine Columbia University New York, NY, US
Department of Medicine Moscow State University ul. Leninskiye Gory, 1 Moscow, Russia 119991	Department of Medicine Moscow State University Moscow, Russia

RUNNING HEADS

If you have variations from the chapter titles, which you would like Nova to use as the Running Heads, please mark that at the beginning of any such chapter.

GRAMMAR

Please use the words “this chapter” rather than “this article, this study or my work” in the text. Within this context, remember that the word ‘data’ is plural, i.e. data are.... Also consider for purposes of presentation that the word ‘research’ and ‘evidence’ are collective nouns calling for appropriate adjectives, verb agreement etc. Thus, ‘research/evidence shows/presents’ or ‘research/evidence has shown, is presented’ etc.

ENGLISH/BRITISH SPELLING

The use of British and English spelling of words are both acceptable but must be consistent throughout the book.

Use either all English or all British terms.	English spelling	British Spelling
	Behavioral	behavioural
	Globalization	globalisation

KEYWORDS

These terms must be listed as noun(s) or pronoun(s). Adjectives and adverbs are not permitted.

NOT ACCEPTABLE:

Adjective is a word that describes a noun or pronoun:

Example: sharp, small, minimal, spectacular, moderate,

Adverb usually describe or modify verb:

Example: dramatically, minimally, rapidly, abnormally

FIGURES AND TABLES

Figures

All images, charts, and graphs (hereinafter referred to as “Figures”) must be created in black and white (unless the color option was selected and paid for) and submitted/uploaded with their original sources to your designated SharePoint folder in separate electronic files (one Figure per file). Black and white figures and legends must be clearly distinguishable by shapes and/ or symbols.

If you would like any figure(s) to be in color, please indicate them in our Auxiliary Order Form at <https://novapublishers.com/shop/auxiliary-order-form/>.

(Please note that all maps must be in color and color option must be pre-paid).

- GRAPHICS (charts, graphs, diagrams, etc.) - examples of acceptable file types include DOCX (Microsoft Word), PPT (PowerPoint), AI (Adobe Illustrator) and PSD (Adobe Photoshop). Screenshots and photos of charts, graphs and diagrams will not be accepted.
- PHOTOS - acceptable image formats include JPEG, PNG, TIFF, BMP, and GIF. All photos must be high-resolution, with a DPI measurement of 350-750.
- Please keep vertical (portrait) tables and figures at a maximum width of 4.5 inches. If width is a problem, please use the landscape layout with section breaks on both sides if MS Word is being used. Maximum landscape width is 6.5 inches.
- All figures must be clear and easily readable.
- Figures and captions text should be in English.
- Pictures should be centered, and the captions should be left-aligned.
- numbering of figures must be continuous throughout the book.
- Please note the placement of each figure within your chapter and provide separate figure files as mentioned above.
- All figures require a full caption(s) (see below).
- Set figure caption *after* the figure.

INCORRECT	CORRECT
Figure 1.	Figure 1. Number of days attending school.

Prior to submitting your chapter(s) to Nova, please make sure that all figures are clear and readable both in electronic and printed formats (printing out figures prior to submission for verification is strongly recommended).

Tables

- Must be a Word file.
- Word tables should not be tab or space delineated and should not use color.
- TIFF and JPG files are not acceptable.
- All tables require a full caption(s).
- Set table caption *before* the table.
- If possible, each individual table should fit on one page. If it must be split, column headers should be repeated.
- The use of bold text should be avoided (except in chapter titles and section headings).
- You may use any font size ranging from 8 to 10 point. Page layout will do all aspects of the formatting.
- numbering of the tables and figures must be continuous throughout the book.

If you have any questions regarding the above instructions, please contact Sue Lau at sue@novapublishers.com.

Thank you.

EQUATIONS

All equations must be clear, readable and numbered sequentially. The equation number must be aligned to the right margin e.g.;

$$(A+B)=C \tag{1}$$

$$(1+2=3)+2=5 \tag{2}$$

Authored books must have continuous numbering throughout the book.

The Word Equation Editor or MathType usage are both acceptable.

Equations should not be set as a picture or figure.

FOOTNOTES

Please ensure all footnotes are numbered correctly and:

- a) Authored books have continuous numbering throughout the book
- b) Edited books begin with the number “1” in the beginning of each chapter

References are not to be included with the footnotes.

REFERENCES: CHICAGO MANUAL STYLE

- References should be set as Chicago Manual style.
- References are not to be combined with footnotes.
- References should be provided as a separate section (author books must have a references section at end)
- Do not use bold text in any part of the references (unless the subject is Physics or Chemistry).
- If references are numbered within the chapter they must be in chronological order, e.g., [1], [2], [3], etc.
- If the reference section is shown alphabetically, then within the text references must be reflected by author name, year.
- Sources must be italicized.
- URL's should be properly spaced.
- Usage of "et al." and "..." (ellipses) are not acceptable in the "References" section. All authors names must be listed accordingly.
- All references in the "References" section must be cited within the text and all references cited in the text must be in the "References" section.
- If you would like your references to link to the original cited material, please submit as clickable hyperlinks (i.e., DOI, websites, etc.).
- All references should be in English. It can be cited in its original language, however, English translation should be shown in brackets immediately after [] (see table below).

*** ALL REFERENCES MUST BE CITED CORRECTLY AND COMPLETE.**

INCORRECT	CORRECT
Y. Ixtaina, M. I. Capitani, and M. C. Tomás. 2013. La chía (Salvia hispánica L.) como fuente de compuestos bioactivos para la elaboración de alimentos. <i>Aceites and Grasas</i> , 92(III): 410-427].	Ixtaina, Y., Capitani, M. I., Nolasco, S. M. and Tomás, M. C. 2013. <i>La chía (Salvia hispánica L.) como fuente de compuestos bioactivos para la elaboración de alimentos. Aceites and Grasas [Chia (Salvia hispanica L.) as a source of bioactive compounds for food processing. Oils and Fats]</i> , 92(III): 410-427., 92(III): 410-427].

Examples of acceptable forms of reference lists at the end of the chapter are given below:

References: Chicago Manual Style

One Author

Pollan, Michael. 2006. *The Omnivore's Dilemma: A Natural History of Four Meals*. New York: Penguin.

Two or More Authors

Ward, Geoffrey C., and Ken Burns. 2007. *The War: An Intimate History, 1941–1945*. New York: Knopf.

For four or more authors, list all of the authors in the reference list; in the text, list only the first author, followed by *et al.* (“and others”):

Editor, Translator, or Compiler Instead of Author

Lattimore, Richmond, trans. 1951. *The Iliad of Homer*. Chicago: University of Chicago Press.

Editor, Translator, or Compiler in Addition to Author

García Márquez, Gabriel. 1988. *Love in the Time of Cholera*. Translated by Edith Grossman. London: Cape.

Chapter or Other Part of a Book

Kelly, John D. 2010. “Seeing Red: Mao Fetishism, Pax Americana, and the Moral Economy of War.” In *Anthropology and Global Counterinsurgency*, edited by John D. Kelly, Beatrice Jauregui, Sean T. Mitchell, and Jeremy Walton, 67–83. Chicago: University of Chicago Press.

Chapter of an Edited Volume Originally Published Elsewhere (as in Primary Sources)

Cicero, Quintus Tullius. 1986. “Handbook on Canvassing for the Consulship.” In *Rome: Late Republic and Principate*, edited by Walter Emil Kaegi Jr. and Peter White. Vol. 2 of *University of Chicago Readings in Western Civilization*, edited by John Boyer and Julius Kirshner, 33–46. Chicago: University of Chicago Press. Originally published in Evelyn S. Shuckburgh, trans., *The Letters of Cicero*, vol. 1 (London: George Bell & Sons, 1908).

Preface, Foreword, Introduction, or Similar Part of a Book

Rieger, James. 1982. Introduction to *Frankenstein; or, The Modern Prometheus*, by Mary Wollstonecraft Shelley, xi–xxxvii. Chicago: University of Chicago Press.

References: Chicago Manual Style

Journal Article

Article in a Print Journal

In the text, list the specific page numbers consulted, if any. In the reference list entry, list the page range for the whole article.

Weinstein, Joshua I. 2009. "The Market in Plato's Republic." *Classical Philology* 104:439–58.

Article in an Online Journal

Include a DOI (Digital Object Identifier) if the journal lists one. A DOI is a permanent ID that, when appended to <http://dx.doi.org/> in the address bar of an Internet browser, will lead to the source. If no DOI is available, list a URL. Include an access date only if one is required by your publisher or discipline.

Kossinets, Gueorgi, and Duncan J. Watts. 2009. "Origins of Homophily in an Evolving Social Network." *American Journal of Sociology* 115:405–50. Accessed February 28, 2010. doi:10.1086/599247.

Article in a Newspaper or Popular Magazine

Newspaper and magazine articles may be cited in running text ("As Sheryl Stolberg and Robert Pear noted in a *New York Times* article on February 27, 2010, . . ."), and they are commonly omitted from a reference list. The following examples show the more formal versions of the citations. If you consulted the article online, include a URL; include an access date only if your publisher or discipline requires one. If no author is identified, begin the citation with the article title.

Mendelsohn, Daniel. 2010. "But Enough about Me." *New Yorker*, January 25.

Stolberg, Sheryl Gay, and Robert Pear. 2010. "Wary Centrists Posing Challenge in Health Care Vote." *New York Times*, February 27. Accessed February 28, 2010. <http://www.nytimes.com/2010/02/28/us/politics/28health.html>.

Book Review

Kamp, David. 2006. "Deconstructing Dinner." Review of *The Omnivore's Dilemma: A Natural History of Four Meals*, by Michael Pollan. *New York Times*, April 23, Sunday Book Review. <http://www.nytimes.com/2006/04/23/books/review/23kamp.html>.

Thesis or Dissertation

Choi, Mihwa. 2008. "Contesting *Imaginaires* in Death Rituals during the Northern Song Dynasty." PhD diss., University of Chicago.

References: Chicago Manual Style

Book Published Electronically

If a book is available in more than one format, cite the version you consulted. For books consulted online, list a URL; include an access date only if one is required by your publisher or discipline. If no fixed page numbers are available, you can include a section title or a chapter or other number.

Austen, Jane. 2007. *Pride and Prejudice*. New York: Penguin Classics. Kindle edition.

Kurland, Philip B., and Ralph Lerner, eds. 1987. *The Founders' Constitution*. Chicago: University of Chicago Press. <http://press-pubs.uchicago.edu/founders/>.

Website

A citation to website content can often be limited to a mention in the text (“As of July 19, 2008, the McDonald’s Corporation listed on its website . . .”). If a more formal citation is desired, it may be styled as in the examples below. Because such content is subject to change, include an access date or, if available, a date that the site was last modified. In the absence of a date of publication, use the access date or last-modified date as the basis of the citation.

Google. 2009. “*Google Privacy Policy*.” Last modified March 11. <http://www.google.com/intl/en/privacypolicy.html>.

McDonald’s Corporation. 2008. “*McDonald’s Happy Meal Toy Safety Facts*.” Accessed July 19. <http://www.mcdonalds.com/corp/about/factsheets.html>.

Blog Entry or Comment

Blog entries or comments may be cited in running text (“In a comment posted to *The Becker-Posner Blog* on February 23, 2010, . . .”), and they are commonly omitted from a reference list. If a reference list entry is needed, cite the blog post there but mention comments in the text only. (If an access date is required, add it before the URL; see examples elsewhere in this guide.)

Posner, Richard. 2010. “Double Exports in Five Years?” *The Becker-Posner Blog*, February 21. <http://uchicagolaw.typepad.com/beckerposner/2010/02/double-exports-in-five-years-posner.html>.

E-Mail or Text Message

E-mail and text messages may be cited in running text (“In a text message to the author on March 1, 2010, John Doe revealed . . .”), and they are rarely listed in a reference list. In parenthetical citations, the term *personal communication* (or *pers. comm.*) can be used.

(John Doe, e-mail message to author, February 28, 2010)

References: Chicago Manual Style

or

(John Doe, pers. comm.)

Item in a Commercial Database

For items retrieved from a commercial database, add the name of the database and an accession number following the facts of publication. In this example, the dissertation cited above is shown as it would be cited if it were retrieved from ProQuest's database for dissertations and theses.

Choi, Mihwa. 2008. "Contesting *Imaginaires* in Death Rituals during the Northern Song Dynasty." PhD diss., University of Chicago. ProQuest (AAT 3300426).

Articles from Published Conference Proceedings

The word "in" before the conference title is not italicized.

Osifchin and G. Vau, "Power considerations for the modernization of telecommunications in Central and Eastern European and former Soviet Union (CEE/FSU) countries," in *Second International Telecommunications Energy Special Conference*, 1997, pp. 9-16.

S. Al Kuran, "The prospects for GaAs MESFET technology in dc-ac voltage conversion," in *Proceedings of the Fourth Annual Portable Design Conference*, 1997, pp. 137-142.

Paper Presented at a Meeting or Conference

Adelman, Rachel. 2009. "'Such Stuff as Dreams Are Made On': God's Footstool in the Aramaic Targumim and Midrashic Tradition." *Paper presented at the annual meeting for the Society of Biblical Literature*, New Orleans, Louisiana, November 21-24.

Papers Presented at Conferences, but Unpublished

H. A. Nimr, "Defuzzification of the outputs of fuzzy controllers," presented at 5th International Conference on Fuzzy Systems, Cairo, Egypt, 1996.

Patents

K. Kimura and A. Lipeles, "Fuzzy Controller Component," U. S. Patent 14,860,040, December 14, 1996.

SAMPLE CHAPTER

Chapter

National Elections

William Adam*, PhD

Affiliation

Abstract

This research examined national elections' impact on crash risks of individual stocks listed in the Indonesia Stock Exchange. The study used national elections as a proxy for political uncertainty and negative skewness of stock returns as a proxy for crash risk. On the industry level, researchers found nuances in which national elections' impact varies according to industry, with some industries tending to greater risk of crash than others during national elections and post-national election periods.

Keywords: crash risk, national election, stock market

Introduction

National elections are known to impact stock markets significantly. Previous studies (Saint, 2003; Smith, 2004 and Williams and Van, 2008) have examined national elections' effects on stock markets, with most studies focusing on the overall market, but not looking into national elections' impact on individual stocks.

* Corresponding Author's Email: williamadam.com.

Analytical Framework

Literature Review

Previous literature¹ has documented that market returns exhibit negative skewness and asymmetric volatility, which is a tendency for volatility to rise with negative return. When calculating national elections' impact on crashes, this research adopts a narrow, euphemistic definition of the word "crash," associating it solely with conditional skewness of return distribution, in which conditional skewness is interpreted as a measure of crash.

Information Withholding Hypothesis

Perhaps under desirable policy changes, they might not need to disclose it. Even when election outcomes are unfavorable, managers can then release bad news and blame it partially on unfavorable policy changes so that it seems like an uncontrollable external factor. In the post-election² period, when political uncertainty is lower, managers gradually lose the ability to hide negative information. Since it is unlikely to remain buried, the negative stockpile eventually emerges and is reflected in stock prices that decline sharply or crash.

Method

Sample Construction

Researchers began by examining all stocks listed in the Indonesia Stock Exchange³ from 2000 to 2016, and, next, imposed several criteria. Following these criteria, this study's final sample resulted in unbalanced panel data that included 316 companies with 3195 firm-year observations, the earliest in 2002 and the latest in 2016.

¹ Read literature by John Smith, Article 5, June 30, 1976.

² National Election article, July 4, 2000.

³ Indonesia Stock Exchange newsletter.

Stock Crash Risk Measurements

To calculate crash risk, this research using negative skewness of firm-specific weekly return. We calculated negative skewness of firm-specific weekly return as follows:

$$\text{NCSKEW}_{i,s} = \frac{-[n \times (n-1)^2 \times \sum W_{i,t}^3]}{[(n-1) \times (n-2) \times (\sum W_{i,t}^2)^2]} \quad (1)$$

where firm-specific weekly returns ($W_{i,t}$) are calculated as:

$$W_{i,t} = \ln(1 + \varepsilon_{i,t}) \quad (2)$$

with $\varepsilon_{i,t}$ being residual firm-specific weekly return estimated from an expanded market model as follows:

$$r_{i,t} = \alpha_i + \beta_{1,i} r_{m,t} + \beta_{2,i} r_{m,t-1} + \beta_{3,i} r_{m,t-2} + \beta_{4,i} r_{m,t+1} + \beta_{5,i} r_{m,t+2} + \varepsilon_{i,t} \quad (3)$$

where $r_{i,t}$ is the Wednesday to Wednesday return on stock i in week t and $r_{m,t}$ being market index return for the country in week t .

Results and Discussion

Descriptive Statistics

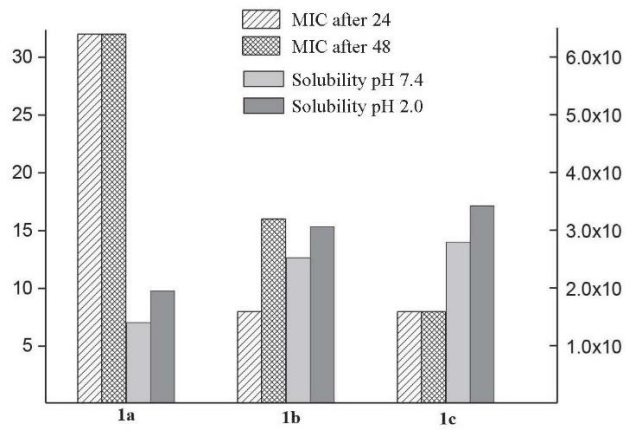
Table 1 presents descriptive statistics for the dependent variable NCSKEW for the whole sample and by industry. Positive mean values for the total sample suggest that individual stocks were, on average, negatively skewed. Researchers also examined the mean and median NCSKEW for the whole sample period—during the election and post-election periods—to reveal statistically movements of skewness⁴.

⁴ NCSKEW, article 10, Vol 2.

Table 1. Descriptive statistics

	Mean		Median	
	Total Sample	Election	Total Sample	Election
Agriculture	-0.056	-0.040	-0.072	-0.023
Property	0.004	-0.245	0.027	-0.034
Others	0.390	0.309	0.178	0.162

The following figure (Figure 1), introduces the ideological distribution of those parties in the political spectrum.

**Figure 1.** Position of the main political parties.

For mining; property, real estate, and construction; transportation, utilities, and infrastructure; and miscellaneous industries, the election period tended to reduce crash risk, but the post-election period tended to increase it.

Regression Results

To test national elections' effect on crash risk, researchers regressed firm-specific negative return skewness on indicator variables that captured national elections along with control variables, with the model that follows:

$$\text{NCSKEW}_{i,t} = \beta_0 + \beta_1 \times \text{ELECTION}_t + \beta_2 \times \text{POST}_t + \beta_3 \times X_{i,t-1} + \varepsilon_{i,t} \quad (4)$$

where subscripts i and t refer to firm and year, $X_{i,t-1}$ refers to control variables, which are all in lagged values.

Regression results are reported in Table 2.

Table 2. Control variables into regression results

	Main Variable	Mining	Basic Industry	Trade	Agriculture
R ²	0.0027	0.148	0.187	0.063	0.0324
# of Observation	3195	263	638	841	98
# of Cross-section observation	316	33	54	85	11

Significant variables at levels of significance 1%, 5%, and 10% (two-sided) are respectively expressed by ***, **, and *. Numbers in brackets are standard errors.

First, researchers included only dependent and independent variables in the regression using all sample firms. Then, researchers incorporated control variables into the regression, still using all sample firms. Next, researchers ran the regression for each industry classification using all variables.

Conclusion

This research examined national (presidential) elections' impact on individual stock's crash risk in Indonesia. Researchers found no indication of information withholding, as significant data shows that individual stock crash risk increases both in election and post-election periods. Overall, our findings suggest that political uncertainty is an important determinant of stocks' crash or downside tail risk.

References

Saint, M. 2003. Precarious politics and return volatility. *The Review of Financial Studies*, 9(4):1111-1154.

Smith, J. 2004. Forecasting crashes: trading volume, past returns, and conditional skewness in stock prices. *Journal of Financial Economics*, 10(3):345-381.

Williams, J. W. and Van, S. 2008. US presidential elections and implied volatility: The role of political uncertainty. *Journal of Banking and Finance*, 39(18):1108-1117.

***Important Note Regarding Chapter References**

- Acceptable Styles include the APA, MLA, Vancouver, Harvard and Oxford Reference Styles.
- Within text, the references should be either author identified or reference number identified and placed in square brackets on the line, e.g. [37].
- The preferred Style is APA for social sciences, Vancouver for biomedicine, AIP for physics, ACS for chemistry and AMS for mathematics. Please use page setup letter size and not A4 paper.
- Every Reference must be cited within the text.
- References may be cited in the text by the author and date of publication in parenthesis or by using numbers in brackets.
- Examples of acceptable forms of reference lists at the end of the chapter/article are given above under “References”.
- If you would like your references to link to the original cited material, please submit as clickable hyperlinks (i.e., DOI, websites, etc.).

Biographical Sketch

Name: William Adam

Affiliation:

Apple University, Physics Faculty, Institute of Theoretical Physics and Astronomy

Education:

2017-2019 Graduated with honors from the Physics Faculty of Apple University

2016-2010, University of Quantum, MD degree in Biochemistry

Business Address:

123 North St., East Wing, Orlando, FL, USA

Research and Professional Experience:

Full senior research fellow position at Apple University since 2017.

Professional Appointments:

Coordinator of the Laboratory of Bacterial Resistance. Associate editor of the Journal of Quantum Physics. Author of several chapters on international books.

Honors:

Scholarship of honor to academic excellence. Professional recognition PEI (2019, 2020).

Publications from the Last 3 Years:

Li, Q., W. Awiyah, Li, S. and Xu, L. (2020). National elections and tail risk: International evidence. *Journal of Banking and Finance*, 113-128.